

REFLECTOR ALTA POTENCIA

Características

Material	Al
Terminado	Gris
Pantalla	Cristal
Índice de protección	IP65
Base	Soporte de Fijación
Dimensiones mm	565*382*75 mm
Lúmenes	44,000 Lm
Temperatura	6,500K
Ángulo	80°

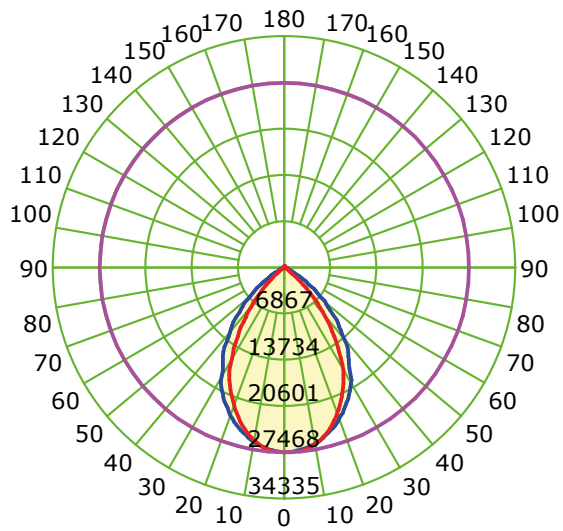
Parámetros Eléctricos

Tensión Nominal [V~]	85-305V~
Consumo de Potencia [W]	400W
Frecuencia Nominal [Hz]	50/60Hz
Consumo de Corriente [A]	4.70 - 1.31 A
Temperatura de Operación	-10 a 45 °C

Beneficios

Garantía	3 Años de Garantía*
Certificación	NOM

LUMINOUS INTENSITY DISTRIBUTION DIAGRAM

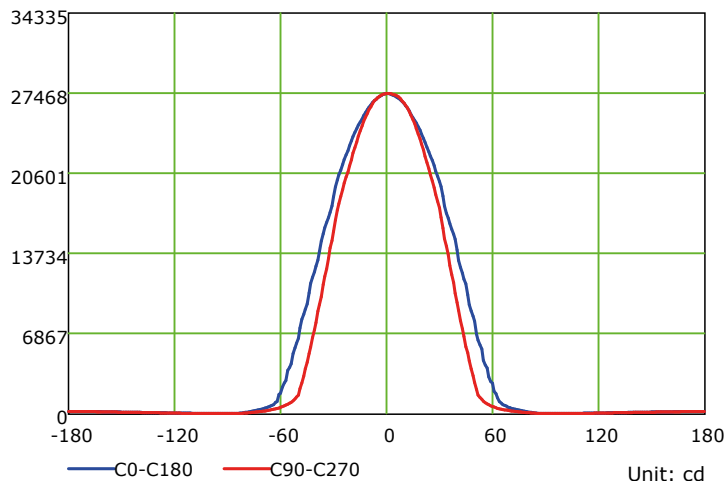


Unit: cd

Average Diffuse Angle(50%): 72.9°

— C0-C180 — C90-C270 — G1

LUMINOUS INTENSITY DISTRIBUTION CURVE

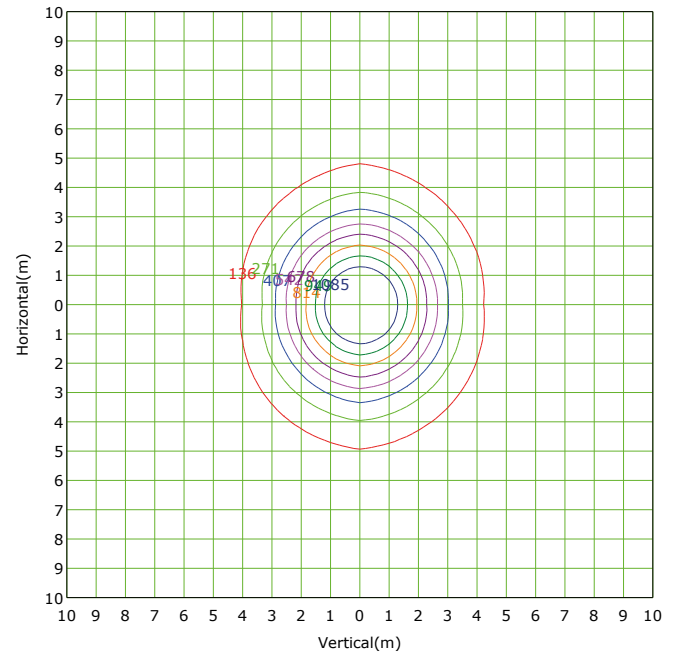
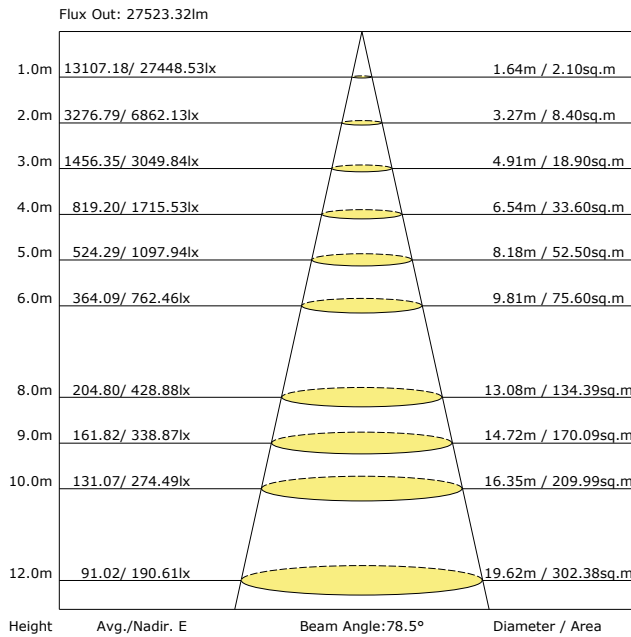


Unit: cd

Características y valores aproximados

*Importante revisar la póliza de garantía de cada producto

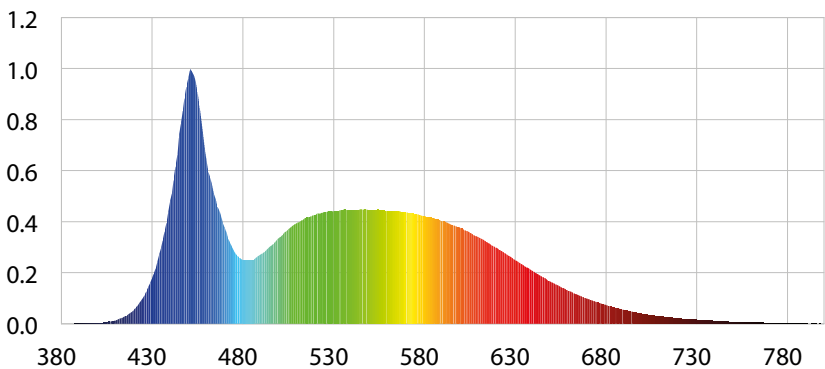
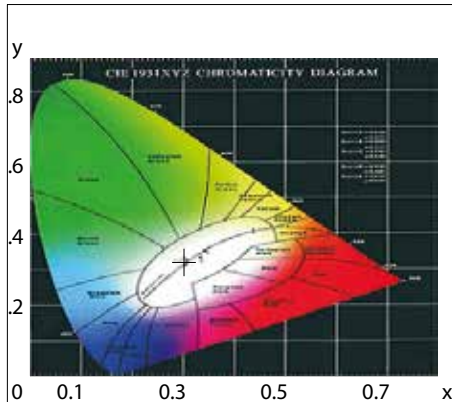




Mounting Height: 4.5m Max Lux(100%): 1355.8 lx

- (10%): 135.6 lx
- (20%): 271.2 lx
- (30%): 406.8 lx
- (40%): 542.3 lx
- (50%): 677.9 lx
- (60%): 813.5 lx
- (70%): 949.1 lx
- (80%): 1084.7 lx

CIE1931 CHROMATICITY DIAGRAM



Parámetros colorimétricos

CCT: Tc=7180K (duv=0.00513)

CRI: Ra= 83.4, avgR(1~14)= 75.9, avgR(1~15)= 76.0

Parámetros fotométricos

Luminous Flux: 42039.13 Lm

EEL: 0.13

Pupil Flux: 82010.37 Plm

Efficiency: 105.10Lm/W

Energy Efficiency Class: A+ (EU 874-2012)

Pupil Lumens Per Watt: 205.03 Plm/W

Radiant Power: 138.386W

Pupil Factor (Kp): 1.951

Parámetros eléctricos

Voltage: 218.20V

Power Factor: 0.9900

Current: 1.8500A

Frequency: 60.00Hz

Power: 400.00W