

REFLECTOR CTSQ5Y

Características

Material	Al
Terminado	Negro
Pantalla	Cr
Índice de protección	IP65
Base	Soporte de Fijación
Dimensiones mm	633*633*100 mm
Lúmenes	110,000 Lm
Temperatura	6,500K
Ángulo	80°

Parámetros Eléctricos

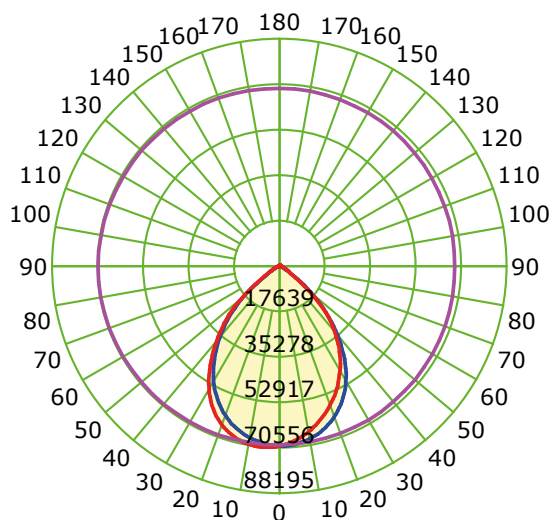
Tensión Nominal [V~]	100-277V~
Consumo de Potencia [W]	1000W
Frecuencia Nominal [Hz]	50/60Hz
Consumo de Corriente [A]	10 - 3.61 A
Temperatura de Operación	-10 a 45 °C



Beneficios

Garantía	5 Años de Garantía *
Certificación	NOM

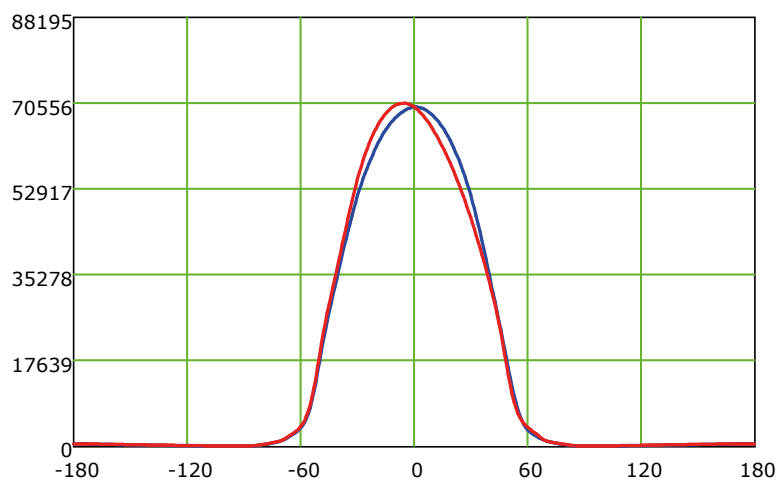
LUMINOUS INTENSITY DISTRIBUTION DIAGRAM



Unit: cd

Average Diffuse Angle(50%): 80.7°

— C0-C180 — C90-C270 — G5

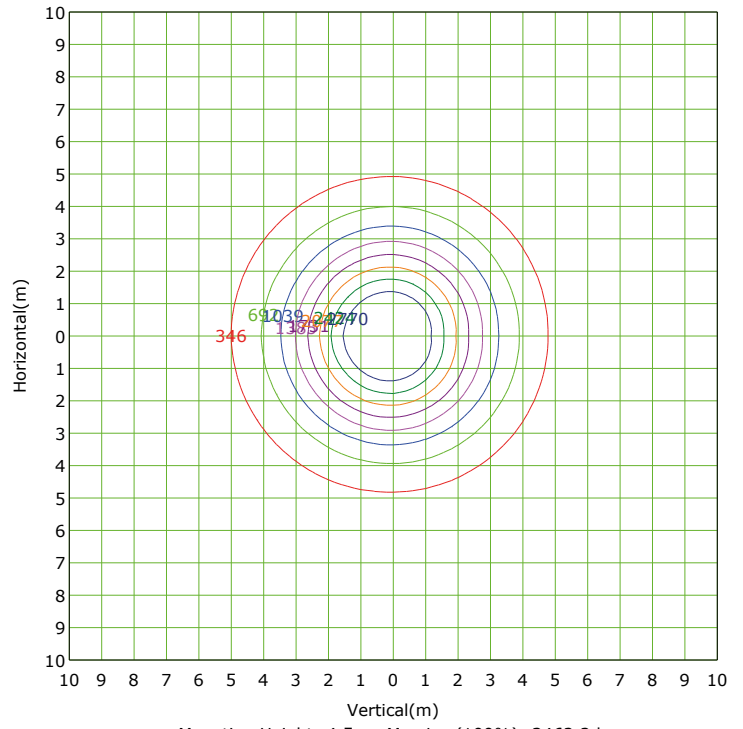
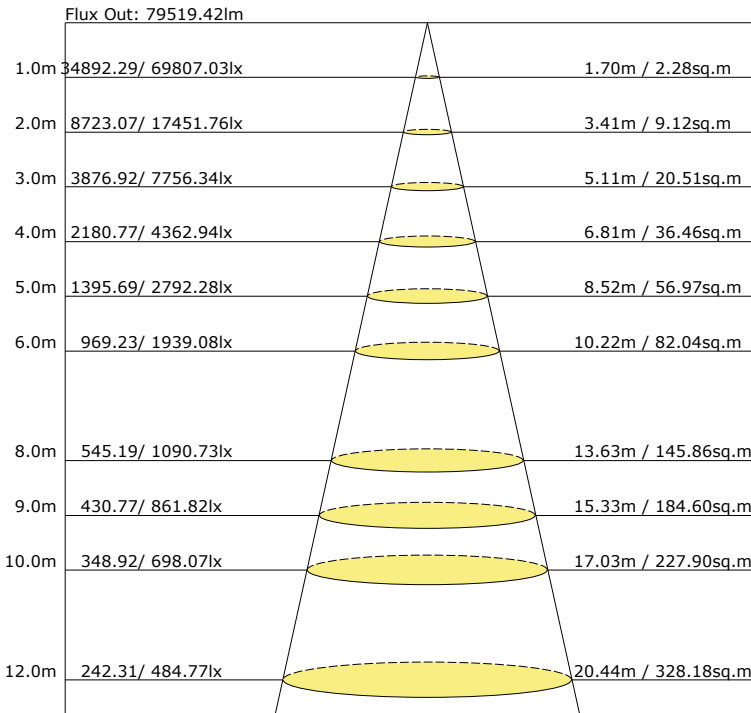


— C0-C180 — C90-C270

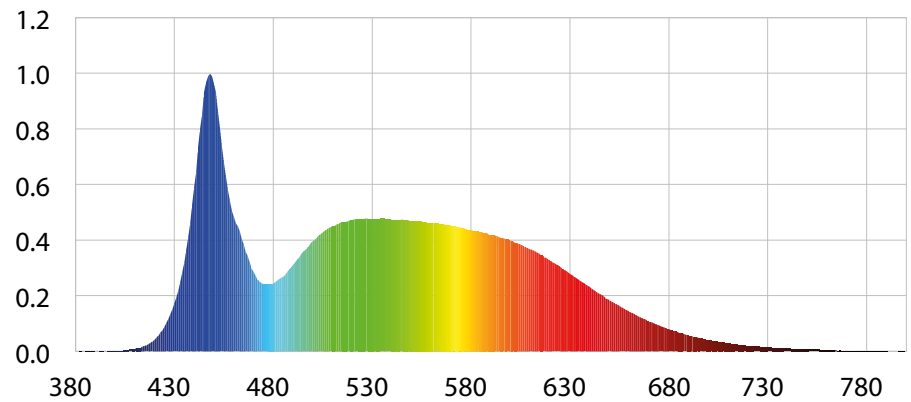
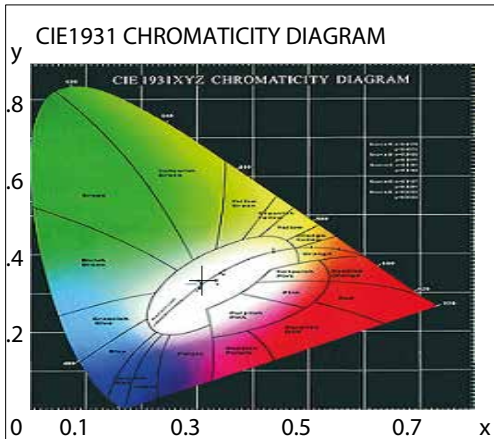
Unit: cd

Características y Valores Aproximados

*Importante revisar la póliza de garantía de cada producto



- (10%): 346.2 lx
- (70%):2423.6 lx
- (60%):2077.3 lx
- (30%):1038.7 lx
- (20%): 692.4 lx
- (80%):2769.8 lx
- (50%):1731.1 lx
- (40%):1384.9 lx



Parámetros colorimétricos

CCT: Tc=6632K (duv=0.00838)
 CRI: Ra= 83.7, avgR(1~14)= 76.5, avgR(1~15)= 76.4

Parámetros fotométricos

Luminous Flux: 115916.86 Lm
 EEL: 0.12
 Pupil Flux: 221225.00 Plm

Efficiency: 111.57Lm/W
 Energy Efficiency Class: A+ (EU 874-2012)
 Pupil Lumens Per Watt: 212.92 Plm/W

Radiant Power: 372.658 W
 Pupil Factor (Kp): 1.908

Parámetros eléctricos

Voltage: 214.50V
 Power Factor: 0.9800

Current: 4.9800A
 Frequency: 60.00Hz

Power: 1039.00W